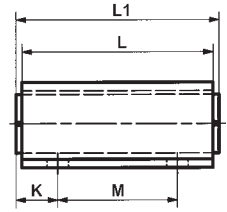
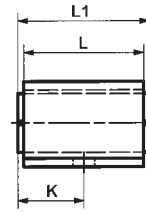
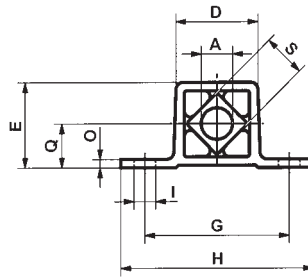
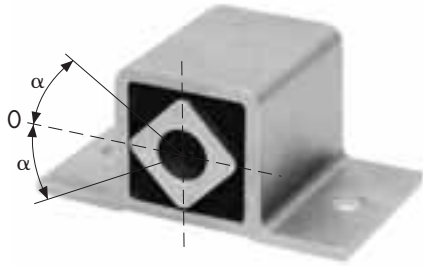




Rubber Suspension Unit

Type DW-C



Art. No.	Type	L	L1-0.3	A	D	E	G	H	ØI	K	M	O	Q	S	Weight in kg
01 121 101	DW-C 15 x 25	25	30	10 ^{+0.4} _{-0.2}	28	29	50	65	7	15.0	-	3	15	15	0.04
01 121 102	DW-C 15 x 40	40	45	10 ^{+0.4} _{-0.2}	28	29	50	65	7	22.5	-	3	15	15	0.07
01 121 103	DW-C 15 x 60	60	65	10 ^{+0.4} _{-0.2}	28	29	50	65	7	12.5	40	3	15	15	0.11
01 121 104	DW-C 18 x 30	30	35	13 ^{-0.2}	34	35	60	80	9	17.5	-	3.5	18	18	0.08
01 121 105	DW-C 18 x 50	50	55	13 ^{-0.2}	34	35	60	80	9	27.5	-	3.5	18	18	0.13
01 121 106	DW-C 18 x 80	80	85	13 ^{-0.2}	34	35	60	80	9	17.5	50	3.5	18	18	0.21
01 121 107	DW-C 27 x 40	40	45	16 ^{+0.5} _{-0.3}	48	49	80	105	11	22.5	-	4.5	25	27	0.21
01 121 108	DW-C 27 x 60	60	65	16 ^{+0.5} _{-0.3}	48	49	80	105	11	32.5	-	4.5	25	27	0.31
01 121 109	DW-C 27 x 100	100	105	16 ^{+0.5} _{-0.3}	48	49	80	105	11	22.5	60	4.5	25	27	0.52
01 121 110	DW-C 38 x 60	60	70	20 ^{+0.5} _{-0.3}	66	67	100	125	13	35	-	6	34	38	0.59
01 121 111	DW-C 38 x 80	80	90	20 ^{+0.5} _{-0.3}	66	67	100	125	13	25	40	6	34	38	0.77
01 121 112	DW-C 38 x 120	120	130	20 ^{+0.5} _{-0.3}	66	67	100	125	13	25	80	6	34	38	1.15

Torque table DW-A and DW-C

Type		Torque M in Nm at α					
		5°	10°	15°	20°	25°	30°
DW-A/C	15 x 25	0.7	1.6	2.6	4.0	5.7	8.2
DW-A/C	15 x 40	1.1	2.5	4.2	6.4	9.2	13.2
DW-A/C	15 x 60	1.6	3.8	6.3	9.6	13.8	19.8
DW-A/C	18 x 30	1.9	4.5	7.5	11.0	15.0	20.6
DW-A/C	18 x 50	3.2	7.5	12.5	18.3	25.0	34.4
DW-A/C	18 x 80	5.1	12.0	20.0	29.3	40.0	55.0
DW-A/C	27 x 40	4.7	10.7	17.5	26.9	39.5	57.0
DW-A/C	27 x 60	7.0	16.0	26.3	40.3	59.3	85.5
DW-A/C	27 x 100	11.7	26.7	43.8	67.2	98.8	142.5
DW-A/C	38 x 60	13.0	30.4	50.6	78.0	113.0	162.0
DW-A/C	38 x 80	17.3	40.5	67.5	104.0	151.0	216.0
DW-A/C	38 x 120	26.0	60.8	101.2	156.0	226.0	324.0
DW-A	45 x 100	34.5	78	130	200	278	400
DW-A	50 x 120	51	133	250	395	570	780
DW-A	50 x 200	102	260	475	745	1070	1450
DW-A	60 x 150	75	170	300	460	700	1010
DW-A	60 x 200	95	220	385	610	930	1380
DW-A	60 x 300	140	365	630	995	1550	2240
DW-A	70 x 200	140	380	650	1040	1490	2120
DW-A	70 x 300	190	525	910	1470	2160	3150
DW-A	70 x 400	250	765	1315	2160	3175	4750
DW-A	80 x 200	200	500	850	1300	1900	2700
DW-A	80 x 300	300	800	1300	2000	2900	4100
DW-A	80 x 400	400	1060	1800	2800	3900	5600
DW-A	100 x 250	400	1080	1800	2800	4100	6300
DW-A	100 x 400	640	1700	2900	4500	6600	10000
DW-A	100 x 500	800	2160	3600	5600	8200	12000