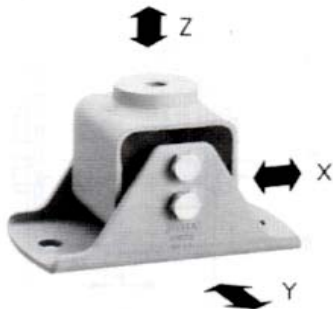




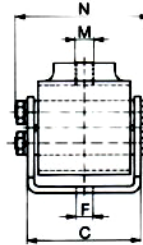
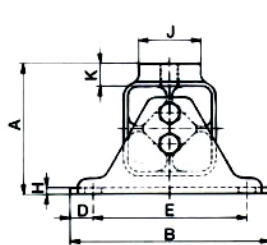
Anti-vibration Mounting

Type V

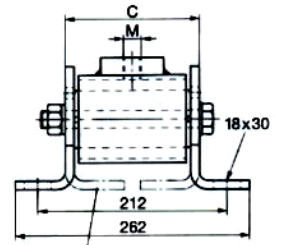
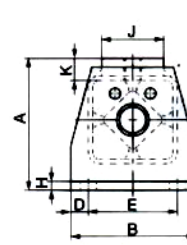


Multi-directional mount for compression, tension and shear loading

Type V 15-45



Type V 50



Alternativ mounting position

Art. No.	Type	Load in N on axes X+X; Z+Z	A	B	C	D	E	ØF	M	N	H	ØJ	K	Weight in kg
05 011 001	V 15	- 800	49	80	51	12.5	55	9.5	M10	58.5	3	20	10	0.30
05 011 002	V 18	600 - 1600	66	100	62	12.5	75	9.5	M10	74	3.5	30	13	0.70
05 011 003	V 27	1300 - 3000	84	130	73	15	100	11.5	M12	85.3	4	40	14.5	1.25
05 011 004	V 38	2600 - 5000	105	155	100	17.5	120	14	M16	117	5	45	17.5	2.45
05 011 005	V 45	4500 - 8000	127	190	122	25	140	18	M20	148	6	60	22.5	4.64
05 011 006	V 50	6000 - 12000	150	140	150	20	100	-	M20	262	10	70	25	7.46

Applications

기계 자체의 방진
외부 진동, 충격을 흡수하여 설치 기계와 설비 보호
분쇄하는 플랜트, 콤푸레서, 펌프, 회전식 컨버터, Mills
발전기, 크레인, 트렉지지대 등에 적용됨

다음과 같이 설치한다 →

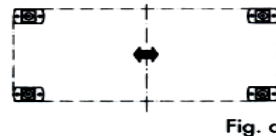


Fig. a

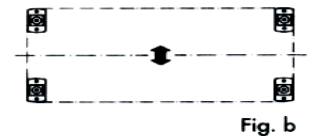


Fig. b

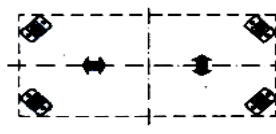


Fig. c

Fig.a: Dynamic forces longitudinal

Fig.b: Dynamic forces lateral

Fig.c: Dynamic forces undeterminant

