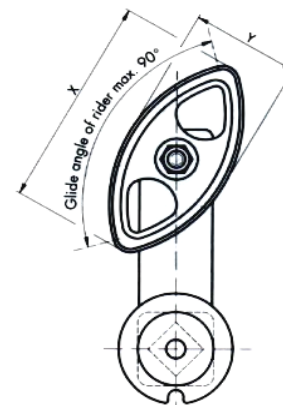
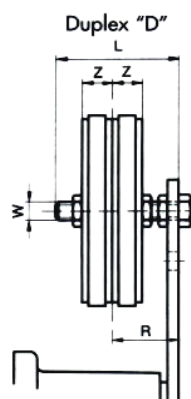
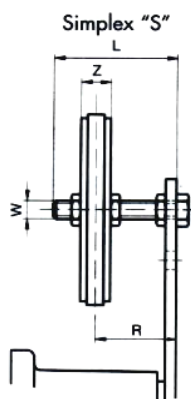


Chain Rider Set

Type P

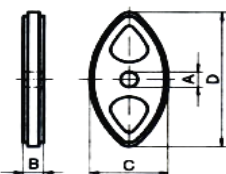


Technical Data

Art. No.	Type	Roller chain DIN 8187	W	L	X	Y	Z	Adjusting range track* R	Weight in kg
Simplex "S"									
06 550 001	P ^{3/8"} - 8 S	ISO 06 B-1	M8	45	74	40	10.2	19-34	0.05
06 550 002	P ^{1/2"} -10 S	ISO 08 B-1	M10	55	96	50	13.9	23-41	0.10
06 550 003	P ^{5/8"} -10 S	ISO 10 B-1	M10	55	126	65	16.6	24-39	0.12
06 550 004	P ^{3/4"} -12 S	ISO 12 B-1	M12	80	148	74	19.5	30-61	0.18
Duplex "D"									
06 560 001	P ^{3/8"} - 8 D	ISO 06 B-2	M8	45	74	40	10.2	25-30	0.07
06 560 002	P ^{1/2"} -10 D	ISO 08 B-2	M10	55	96	50	13.9	30-34	0.12
06 560 003	P ^{5/8"} -10 D	ISO 10 B-2	M10	70	126	65	16.6	34-46	0.17
06 560 004	P ^{3/4"} -12 D	ISO 12 B-2	M12	80	148	74	19.5	40-52	0.26

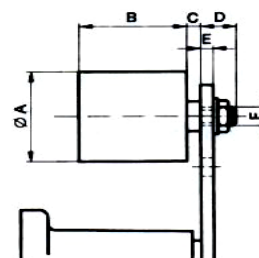
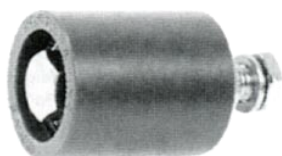
* for SE sizes, please see table on page 40

Chain Rider Type P



Art. No.	Type	Roller chain DIN 8187	A ^{±0.2}	B	C	D	Weight in kg
06 540 001	P ^{3/8"}	ISO 06 B	8	10.2	40	75	0.02
06 540 002	P ^{1/2"}	ISO 08 B	10	13.9	50	96	0.03
06 540 003	P ^{5/8"}	ISO 10 B	10	16.6	65	126	0.05
06 540 004	P ^{3/4"}	ISO 12 B	12	19.5	74	148	0.07

Tensioning Roller



Type R

Art. No.	Type	max. speed n/min.	A	B	C	D	E max.	F	Weight in kg
06 580 001	R 11	8000	30	35	2	14	5	M8	0.08
06 580 002	R 15/18	8000	40	45	6	16	7	M10	0.17
06 580 003	R 27	6000	60	60	8	17	8	M12	0.40
06 580 004	R 38	5000	80	90	8	25	10	M20	1.15
06 580 005	R 45	4500	90	135	10	27	12	M20	1.75